



A MASTERPIECE
FROM THE HOUSE OF

Jithendra CONSTRUCTIONS

A LUXURY OF SPACE,
INSIDE AND OUT.

Unlike any other community, KMG ENCLAVE is a beautiful accord of pride and luxury. These 150 exclusive 2, 3, 4 & 5 BHK made to fit luxury flats are a perfect amalgamation of form and function. Each square inch is built keeping in mind your ardor for aesthetics



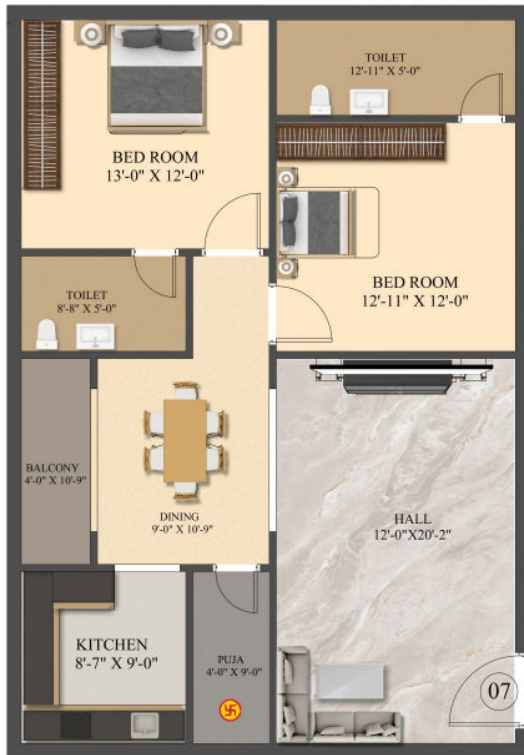
1351sft(2BHK)



PLOT 6 & 12



2020sft(2BHK)



PLOT 7





PLOT
2, 3, 4



2)2334sft(3BHK)
3&4)2450sft(3BHK)

PLOT
9

5397sft(5BHK)

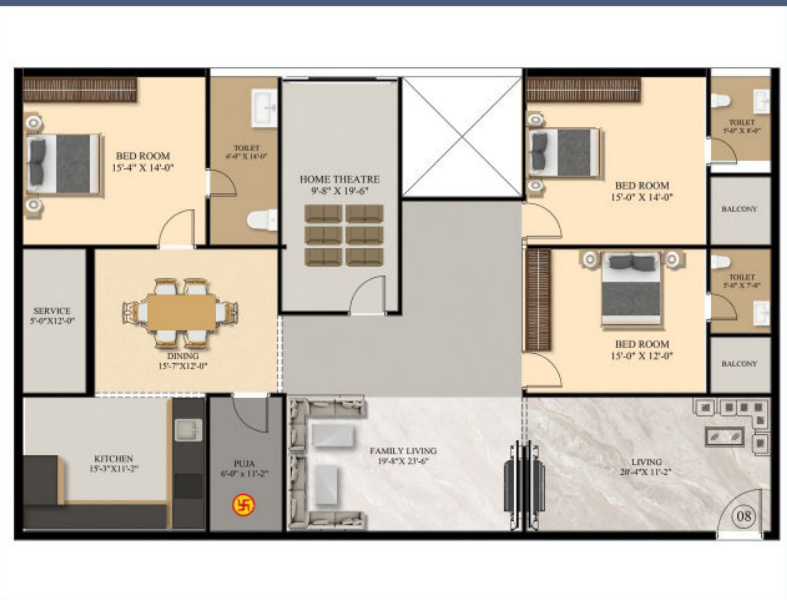




PLOT 5



2870sft(3BHK)



PLOT 8





PLOT
13 & 14

3823sft(4BHK)



HIGHLIGHTS

100% Vaastu Complaint

East , West , North facing luxury flats

User friendly floor plan

Staircase with granite and matt finished SS railing

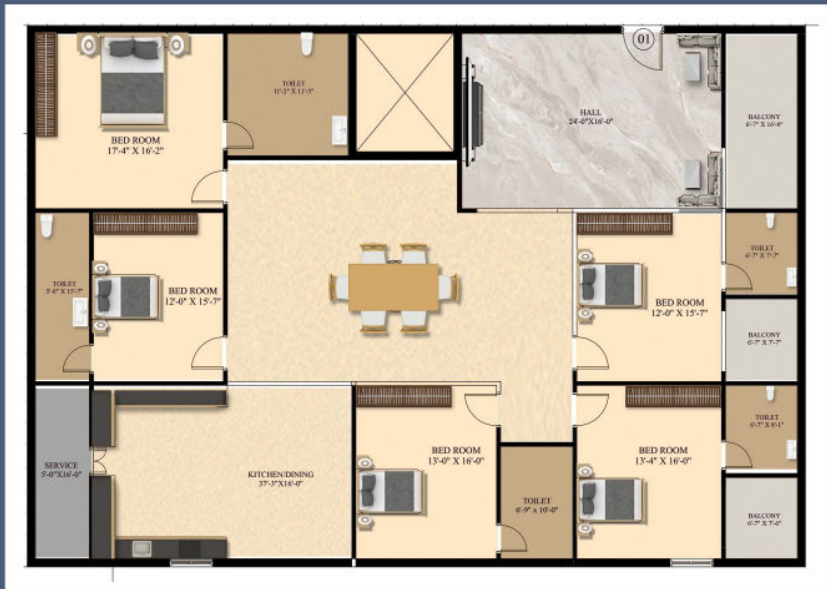
CCTV surveillance

Servant room with intercom facility

Rainwater harvesting system

Nearby famous schools & colleges

Well experienced architect & builder



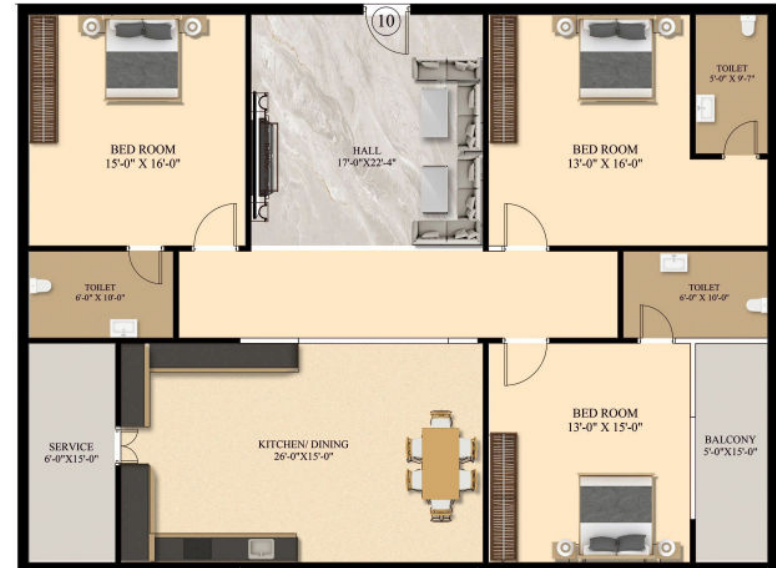
PLOT
10 & 11

2595sft(3BHK)



PLOT
1

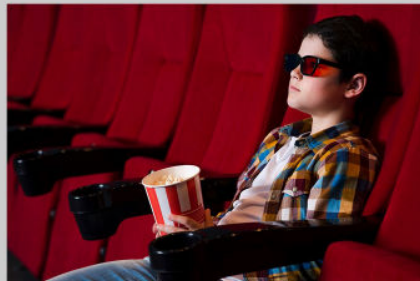
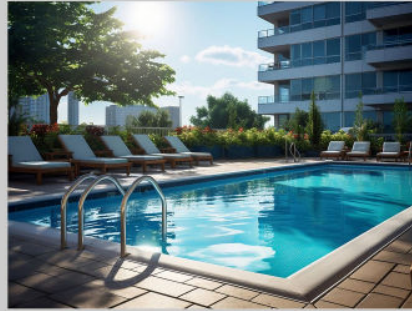
5395sft(5BHK)





INTERIORS, THE OPULENT INSIDE.

Presenting a whole new level in luxury living. So exclusive in style and meticulous in design, they are destined to accentuate the living experience and compliment your flamboyant lifestyle. A home that is as warm and inviting as a mother's lap. The feel of luxury is very much visible in the space, design and each and every minute detail that will make you feel absolutely private yet accessible to life. The aesthetics will complement all your discerning lifestyle requirements and also not compromise on the convenience factor. Opulence, a bare necessity of life today.



AMENITIES

Alluring Elevations

TRANQUILITY PERSONIFIED.



The elevations are imposing and every design element imbibes into it all the practical and functional aspects of comfortable and convenient living.

This visual wonder, is surely going to become a landmark address of the future.

At **KMG ENCLAVE**, you will be welcomed by beautifully manicured green spaces and the meticulously laid out amenities that exemplify your zest to live a holistic life.



SPECIFICATIONS

STRUCTURE

R.C.C. framed structure which is resistant to wind.

SUPER STRUCTURE

External walls 9" & Internal walls 4 ½" thickness, with Clay Moulding Brick

WALL FINISHES

Plastering - Sponge finish to internal and external

EXTERNAL WALLS

*Weather proof cement / textured paint of Asian Paints or equivalent make

FLOORINGS

Flooring with 2' x 4' size Vitrified tiles.

Bathroom Flooring 1.5x1.5' antiskid ceramic tiles.

TILES CLADING & DADOING

- Kitchen - Granite platform dadoing up to 4 ft with Glazed tiles.

Bathroom Walls - Dadoing up to 7ft. with 2' x 1' size Glazed Tiles.

- Wash area - Dadoing up to 3 ft.

DOORS

* Main door frames & shutters with fully polished Teakwood

› Internal door frames with painted WPVC and flush door shutters.

* Fixed with reputed make hardware

PAINTING

3 coats of Wall Care with Primer and

2 coats of Emulsion Paints.

WINDOWS

UPVC framed glazed sliding / open shutters with glass and MS safety grills.

SANITARY FITTINGS / CP FITTINGS

* CP / Sanitary fittings of reputed make.

* CPVC Ashirwad Pipes of reputed make.

KITCHEN

* Granite platform with Sink

ELECTRICAL

3 phase Concealed copper wiring.

› Adequate number of points will be provided DB's with MCB's of superior quality in each flat for safety.

Modular switches and sockets of Branded.

ELEVATOR

6 passenger automated elevators of reputed make.

BACKUP FOR POWER

Generator - KIRLOSKAR or

Equivalent made genset power back up for common areas, water motors.

4 Light & 4 Fan points for each flat.

PARKING

One car parking for each flat

PLOT
15



2720sft(3BHK)



LOCATION PLAN (Not to Scale)



Centrally located for
easy connectivity



SPACIOUS & LUXURY APARTMENTS



A PROJECT BY **Jithendra** CONSTRUCTIONS

About Us

Welcome to Jithendra Constructions, your trusted partner in crafting exceptional living spaces that elevate lifestyles and redefine luxury. With a legacy of excellence spanning years, we take pride in our commitment to quality, integrity, and customer satisfaction.

At Jithendra Constructions, we believe in more than just building structures; we create havens where families thrive and memories flourish. Our passion for innovation and attention to detail are evident in every project we undertake, setting new benchmarks in the real estate industry.

Introducing KMG Enclave, our latest endeavor designed to epitomize elegance and sophistication. Nestled in the serene surroundings of LAM, Guntur, Andhra Pradesh, KMG Enclave offers 10 floors, each floor with 15 exclusive **2, 3, 4 & 5BHK plots**, each meticulously planned to provide the ultimate in luxury living.

With a focus on delivering excellence and exceeding expectations, Jithendra Constructions is committed to ensuring that each client's vision is transformed into reality.

Experience the epitome of luxury living with Jithendra Constructions and make KMG Enclave your new address of distinction. Welcome to a world where dreams meet reality, and luxury knows no bounds.



WITH WORLD CLASS AMENITIES

- 6' Walking & Jogging Track
- Solar Fencing
- CC Camera Surveillance
- Intercom
- Separate Visitors Parking
- RO Water Plant
- Open Air Theatre
- Mini Theatre with Recliner Chairs
- Swimming Pool
- Conference Hall
- Multi Purpose Function Hall
- Fully Equipped Gym Indoor Games
- Chess Room
- Billiards
- Table Tennis
- Carroms
- Skating Rink
- Senior Citizen Space
- Mini Super Market
- Cricket Net
- Driver Waiting Room
- Separate Lounge for each Block
- Lift Lounge for Each Floor
- Pantry
- Abode & Abundant Drinking Water
- Pharmacy & Consultation Room
- Shuttle Court Yoga & Meditation
- Basket Ball
- Common Toilets
- Swimming Trainer
- Flower Garden
- Water Bodies with Small Fountain
- Childrens Play Area
- Library & Reading Room

IN & AROUND

- BESIDE 100 VILLAS
- OPP TO DELHI PUBLIC SCHOOL
- 10KM TO LODGE CENTER,, GNTUR
- 18KM TO AMARAVATI
- 20KM TO A.P. SACHIVALAYAM
- 4KM TO CHALAPATI COLLEGE
- 20KM TO VIIT
- 20KM TO NIT
- 13KM TO SRM UNIVERSITY

